

# Accommodation Review Committee (ARC)

---

## 2009-2010 East Planning Area

### Working Group Meeting #10

January 20, 2010

Pius XII Elementary School

---

# Opening Prayer

---

## *Prayer for Guiding Presence*

*Lord God, creator of all,  
remind us now of your guiding presence.*

*Open our minds to the ideas and the opportunities before us,  
and fill our hearts with compassion and generosity for each other.*

*We pray this day for the well being and success  
of our students, for our colleagues and for our families, and our community*

*Bless each of us and our work,  
Be with us and lead us in our discussions.*

*We make this prayer in your name,*

*Amen.*

# Welcome

---

- Approve tonight's agenda

# Agenda

---

## Item

1. Opening Prayer
2. Welcome
3. Binder Updates
4. Review of Minutes from Last Meeting
  - a. January 5 Working Meeting #8
  - b. January 6 Working Meeting #9
  - c. January 13 Public Meeting #3
5. Review of Input from Public Meeting #3
6. Finalize Accommodation Options
7. Draft of ARC Recommendations to the Director
8. Tasks for Next Meeting
9. Questions & Answers
10. Next Meeting
11. Closing Prayer

# Binder Updates

---

## Review of Input from Public Meeting #3

---

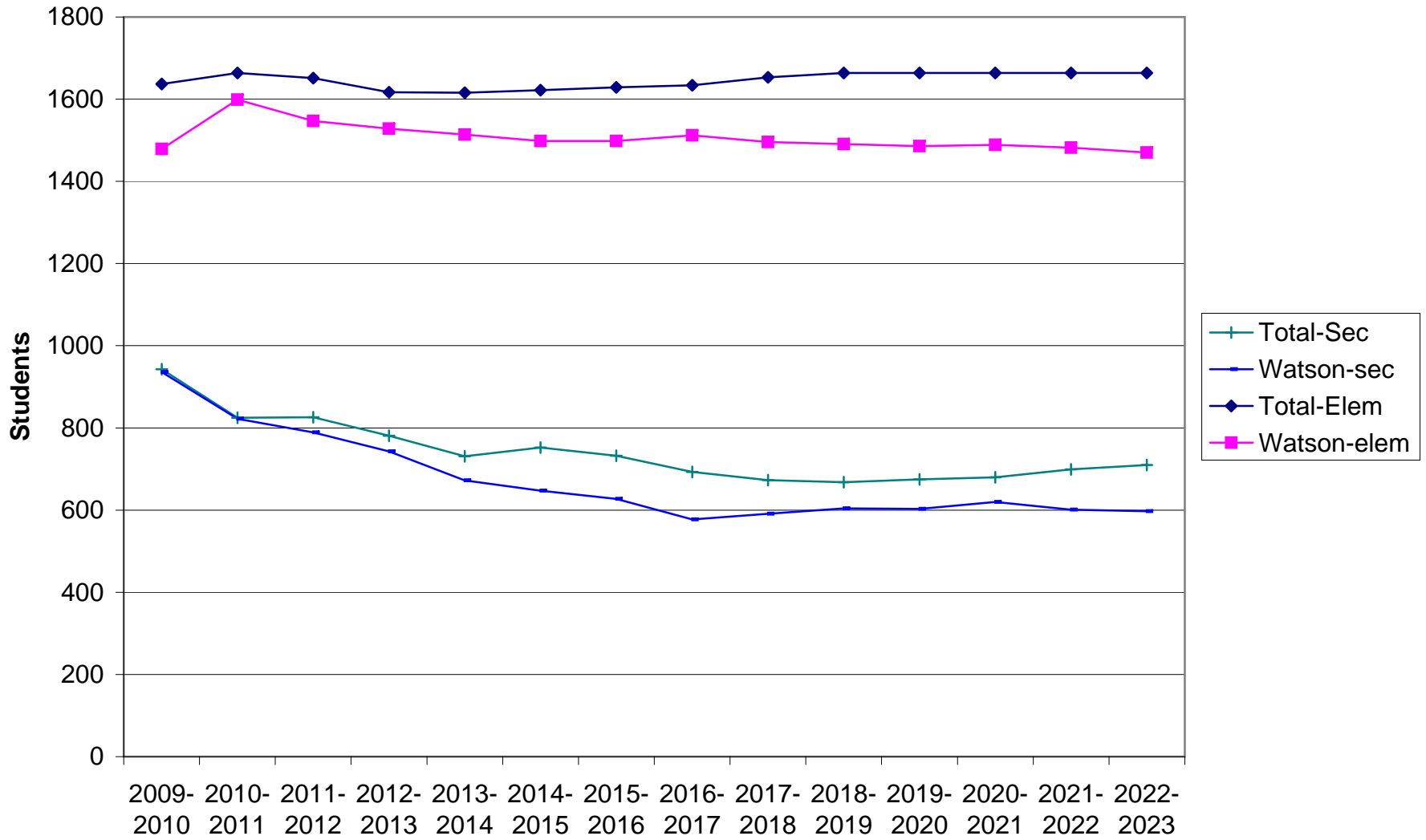
- ❑ Supporting rationale and documentation for Grade 7 to 12 programming
- ❑ Student retention rates - elementary to secondary (Marymount, Warton, Hanmer High)
- ❑ Impact of introducing Grade 7 and 8 students at the existing St. Charles College
- ❑ French Immersion site for Planning Area
- ❑ Secondary enrolment projection concerns
- ❑ Options for St. Albert ALC
- ❑ Deferred capital cost implications of option #1-5

# Secondary Enrolment Projection Concerns

December 31,2009																	
	JK	SK	1	2	3	4	5	6	7	8	Total	SE	Total-elem				
St. Andrew	23	20	15	19	21	18	19	16	0	0	151	0	151				
St. Bernadette	20	17	13	15	8	10	9	11	0	0	103	0	103				
St. John	38	30	33	36	36	29	34	43	43	33	355	0	355				
St. Mark	0	1	1	0	1	2	2	2	0	0	9	0	9				
St. Paul	27	26	29	33	26	25	25	38	25	26	280	0	280				
Pius XII	35	24	25	29	30	29	29	37	24	20	282	33	315				
St. Raphael	17	31	25	23	31	41	43	47	81	54	393	31	424				
																Watson-elem	Diff
2009-2010	160	149	141	155	153	154	161	194	173	133	1573	64	1637	1479	158		
2010-2011	160	160	149	141	155	153	154	161	194	173	1600	64	1664	1599	65		
2011-2012	160	160	160	149	141	155	153	154	161	194	1587	64	1651	1547	104		
2012-2013	160	160	160	160	149	141	155	153	154	161	1553	64	1617	1528	89		
2013-2014	160	160	160	160	160	149	141	155	153	154	1552	64	1616	1514	102		
2014-2015	160	160	160	160	160	160	149	141	155	153	1558	64	1622	1498	124		
2015-2016	160	160	160	160	160	160	160	149	141	155	1565	64	1629	1498	131		
2016-2017	160	160	160	160	160	160	160	160	149	141	1570	64	1634	1512	122		
2017-2018	160	160	160	160	160	160	160	160	160	149	1589	64	1653	1496	157		
2018-2019	160	160	160	160	160	160	160	160	160	160	1600	64	1664	1491	173		
2019-2020	160	160	160	160	160	160	160	160	160	160	1600	64	1664	1486	178		
2020-2021	160	160	160	160	160	160	160	160	160	160	1600	64	1664	1489	175		
2021-2022	160	160	160	160	160	160	160	160	160	160	1600	64	1664	1482	182		
2022-2023	160	160	160	160	160	160	160	160	160	160	1600	64	1664	1470	194		

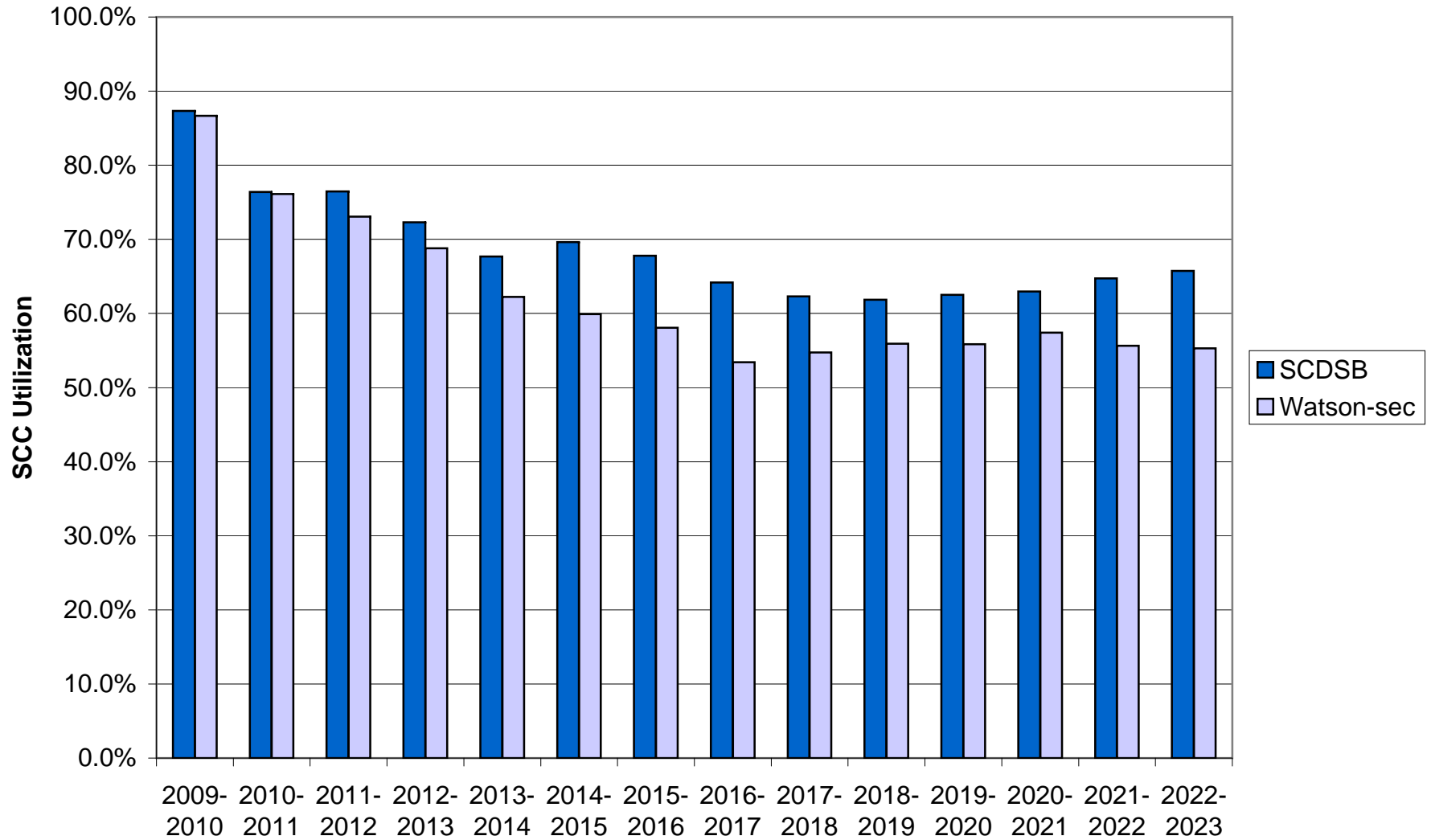


### SCDSB model vs Watson

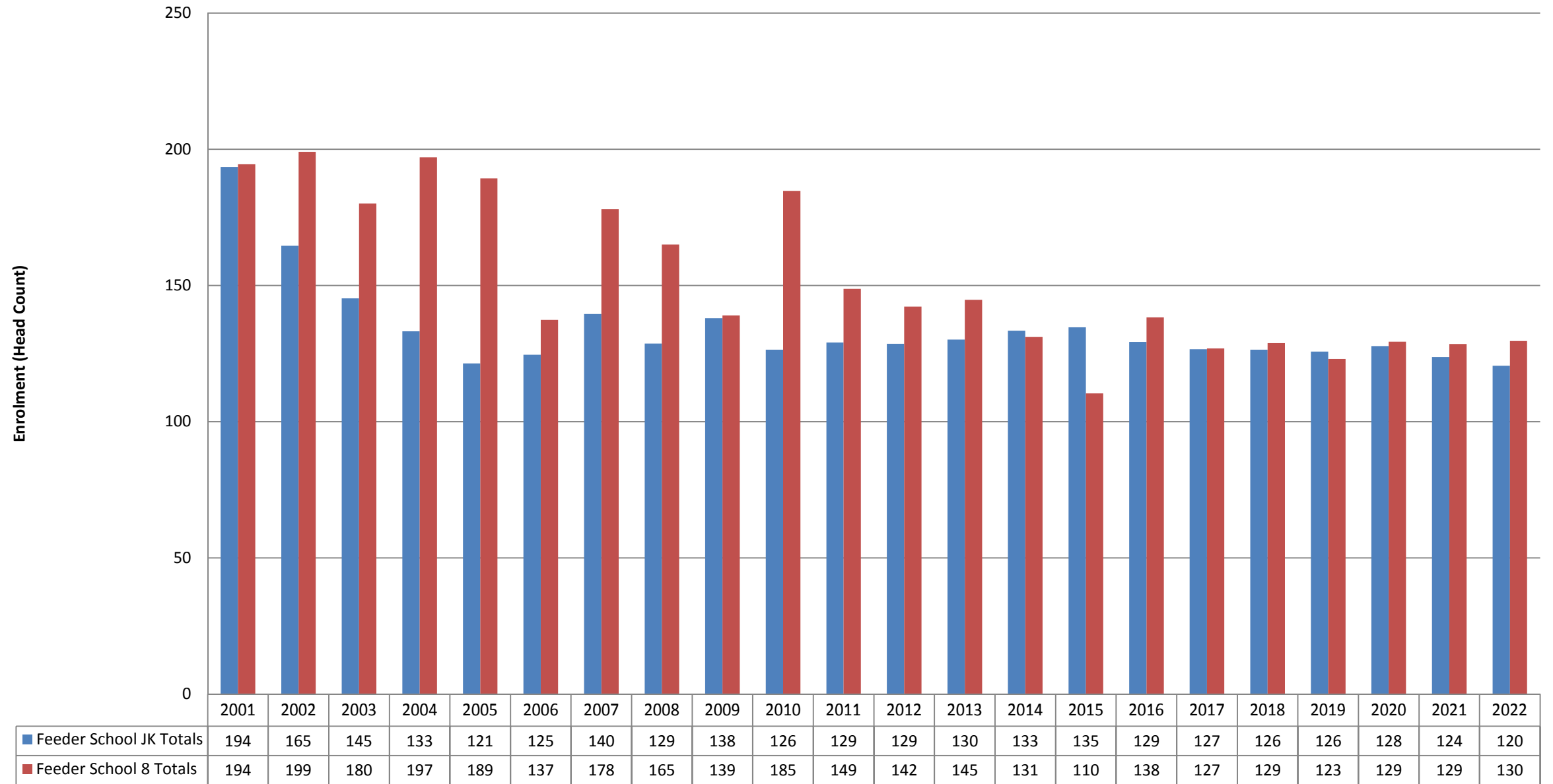


SCC											1080	
Year	9	10	11	12	Total	SE	Total-Sec	Watson-se	Diff	SCDSB	Watson	
2009-2010	211	239	172	251	873	70	943	936	7	87.3%	86.7%	
2010-2011	133	211	239	172	755	70	825	822	3	76.4%	76.1%	
2011-2012	173	133	211	239	756	70	826	789	37	76.5%	73.1%	
2012-2013	194	173	133	211	711	70	781	743	38	72.3%	68.8%	
2013-2014	161	194	173	133	661	70	731	672	59	67.7%	62.2%	
2014-2015	154	161	194	173	682	70	752	647	105	69.6%	59.9%	
2015-2016	153	154	161	194	662	70	732	627	105	67.8%	58.1%	
2016-2017	155	153	154	161	623	70	693	577	116	64.2%	53.4%	
2017-2018	141	155	153	154	603	70	673	591	82	62.3%	54.7%	
2018-2019	149	141	155	153	598	70	668	604	64	61.9%	55.9%	
2019-2020	160	149	141	155	605	70	675	603	72	62.5%	55.8%	
2020-2021	160	160	149	141	610	70	680	620	60	63.0%	57.4%	
2021-2022	160	160	160	149	629	70	699	601	98	64.7%	55.6%	
2022-2023	160	160	160	160	640	70	710	597	113	65.7%	55.3%	

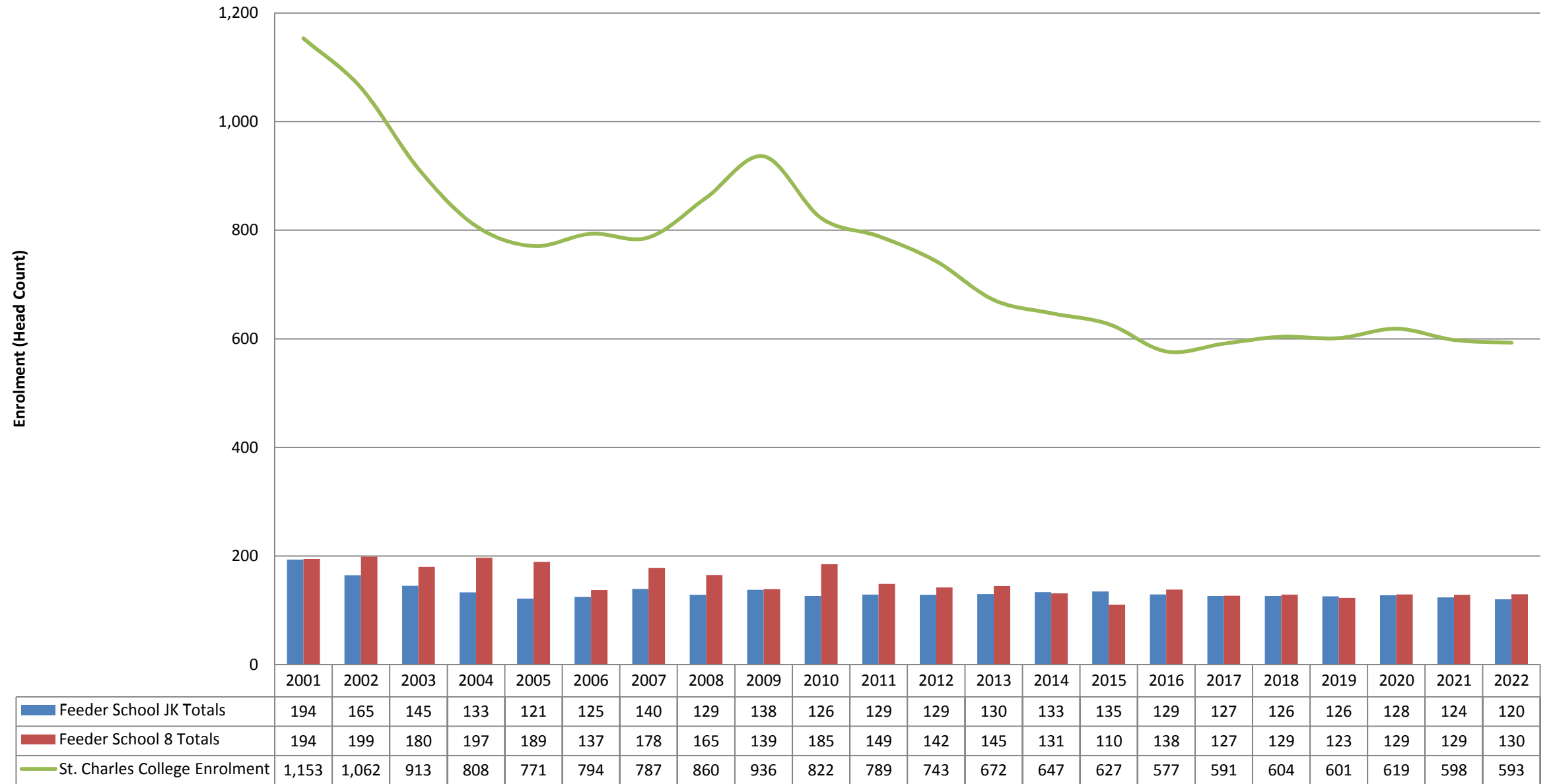
## SCDSB model vs Watson



### St. Charles College Elementary Feeder Analysis



### St. Charles College Elementary Feeder Analysis



St. Charles College Feeder Schools Analysis

St. Raphael School (JK-8, FI Gr 7-8)																							
	Hist 2001/2002	Hist 2002/2003	Hist 2003/2004	Hist 2004/2005	Hist 2005/2006	Hist 2006/2007	Curr 2007/2008	Year 1 2008/2009	Year 2 2009/2010	Year 3 2010/2011	Year 4 2011/2012	Year 5 2012/2013	Year 6 2013/2014	Year 7 2014/2015	Year 8 2015/2016	Year 9 2016/2017	Year 10 2017/2018	Year 11 2018/2019	Year 12 2019/2020	Year 13 2020/2021	Year 14 2021/2022	Year 15 2022/2023	
JK	21	16	17	16	10	12	11	11	11	22	25	24	25	25	24	23	23	22	22	23	22	21	
SK	19	22	18	18	20	13	11	13	11	26	25	28	28	28	29	28	27	26	26	26	26	25	
1	38	44	51	40	44	51	35	27	24	32	32	31	35	34	35	34	32	32	32	32	31	32	
2	48	42	45	52	40	42	45	34	20	31	31	31	30	34	33	34	34	33	31	31	31	30	
3	47	53	38	34	63	42	45	46	30	27	32	32	32	31	34	34	35	35	34	32	31	31	
4	54	51	54	54	37	70	48	53	42	41	32	38	37	38	36	41	40	41	42	40	38	37	
5	41	56	48	46	51	38	70	45	42	52	39	30	37	36	36	34	39	39	39	40	38	36	
6	50	45	57	52	45	54	43	74	46	54	56	42	32	39	38	38	37	41	41	41	42	40	
7	102	71	76	84	63	71	75	60	76	68	76	79	59	46	55	54	55	52	59	58	59	60	
8	87	99	68	76	77	56	70	71	55	99	65	72	75	56	44	53	51	52	50	56	56	56	
SE	13	0	20	19	19	35	34	34	30	34	34	34	34	34	34	34	34	34	34	34	34	34	
OTH	-	-	-	-	-	-	-	-	-	-	-	-	-	-	-	-	-	-	-	-	-	-	
Total	522	496	489	489	470	485	486	469	387	486	446	441	423	401	399	408	408	408	409	412	408	404	

Grd. 8 Total	194	199	180	197	189	137	178	165	139	185	149	142	145	131	110	138	127	129	123	129	129	130	2003 - 2009 Avg. Retention Rate	2009 - 2022 Avg. Retention Rate
Grd. 9 Retention		96.7%	102.0%	85.5%	103.3%	109.0%	145.8%	121.2%	129.7%	113.1%	88.8%	115.2%	97.4%	91.5%	107.6%	116.4%	112.2%	111.5%	110.7%	112.5%	106.4%	107.7%	113.8%	108.6%

St. Charles College																								
	Hist 2001/2002	Hist 2002/2003	Hist 2003/2004	Hist 2004/2005	Hist 2005/2006	Hist 2006/2007	Curr 2007/2008	Year 1 2008/2009	Year 2 2009/2010	Year 3 2010/2011	Year 4 2011/2012	Year 5 2012/2013	Year 6 2013/2014	Year 7 2014/2015	Year 8 2015/2016	Year 9 2016/2017	Year 10 2017/2018	Year 11 2018/2019	Year 12 2019/2020	Year 13 2020/2021	Year 14 2021/2022	Year 15 2022/2023	2003-2009 Avg. Retention Rate	2009-2022 Avg. Retention Rate
9	275	188	203	154	204	206	200	216	214	157	164	171	139	132	141	129	155	141	143	138	138	138		
10	274	260	191	183	150	196	212	207	238	206	162	169	177	143	137	146	133	160	147	148	143	142	100.3%	102.6%
11	203	260	242	174	180	148	183	199	208	208	193	152	159	166	135	129	137	125	151	138	139	134	95.9%	93.2%
12	247	203	278	296	238	243	191	238	276	251	269	250	197	205	215	174	166	177	161	195	178	178	131.7%	128.2%
OAC	154	151	-	-	-	-	-	-	-	-	-	-	-	-	-	-	-	-	-	-	-	-		
SE	-	-	-	-	-	-	-	-	-	-	-	-	-	-	-	-	-	-	-	-	-	-		
OTH	-	-	-	-	-	-	-	-	-	-	-	-	-	-	-	-	-	-	-	-	-	-		
Total	1,153	1,062	913	808	771	794	787	860	936	822	789	743	672	647	627	577	591	604	601	619	598	593		

# Deferred Capital Cost Implications of ARC Options #1-5

SUDBURY CATHOLIC DISTRICT SCHOOL BOARD

Scenario Builder

Proposed Scenario: **ARC Option #1**

Financial Summary

**Status Quo**

School Name	2009 OTG	Renewal Needs	
		2008/09	2013/14
Pius XII	315	\$ 3,887,051	\$ 4,701,968
St. Andrew	201	\$ 1,829,563	\$ 2,468,178
St. Bernadette	135	\$ 1,737,811	\$ 2,447,741
St. John	368	\$ 2,269,579	\$ 2,832,381
St. Mark	69	\$ -	\$ -
St. Paul	386	\$ 3,154,891	\$ 5,338,750
St. Raphael	539	\$ 5,160,976	\$ 7,851,532
St. Charles College	1,080	\$ 8,431,271	\$ 14,584,341
<b>TOTAL</b>	<b>3,093</b>	<b>\$ 26,471,141</b>	<b>\$ 40,224,890</b>

**Proposed Scenario**

**ARC Option #1 -**

Manual  
Input

School Name	2009 OTG	New School Construction or Addition	Cost of New School Construction or Addition	Demolition Costs	Renewal Needs	
					2008/09	2013/14
Pius XII	225	--	\$ 4,000,000	\$ 500,000	\$ 3,887,051	\$ 2,051,589
St. Andrew	0	--	--		--	--
St. Bernadette	0	--	--		--	--
St. John	368	--	--		\$ 2,269,579	\$ 2,832,381
St. Mark	69	--	--		\$ -	\$ -
St. Paul	386	--	--		\$ 3,154,891	\$ 5,338,750
St. Raphael	539	--	\$ 5,500,000	\$ 600,000	\$ 5,160,976	\$ 3,851,532
NEW ELEMENTARY SCHOOL	0	--	--			
St. Charles College	1,080	--	\$ 3,000,000		\$ 8,431,271	\$ 14,584,341
		--	--		--	--
<b>TOTAL</b>	<b>2,667</b>	<b>--</b>	<b>\$ 12,500,000</b>	<b>\$ 1,100,000</b>	<b>\$ 22,903,767</b>	<b>\$ 28,658,592</b>
<b>Diff Compared to Status Quo Scenario</b>	<b>-426</b>	<b>--</b>	<b>\$</b>	<b>13,600,000</b>	<b>\$ (3,567,374)</b>	<b>\$ (11,566,298)</b>

PLEASE NOTE: This option will require additional funds from the Ministry of Education



SUDBURY CATHOLIC DISTRICT SCHOOL BOARD

Scenario Builder

Proposed Scenario: ARC Option #2-

Financial Summary

Status Quo

School Name	2009 OTG	Renewal Needs	
		2008/09	2013/14
Pius XII	315	\$ 3,887,051	\$ 4,701,968
St. Andrew	201	\$ 1,829,563	\$ 2,468,178
St. Bernadette	135	\$ 1,737,811	\$ 2,447,741
St. John	368	\$ 2,269,579	\$ 2,832,381
St. Mark	69	\$ -	\$ -
St. Paul	386	\$ 3,154,891	\$ 5,338,750
St. Raphael	539	\$ 5,160,976	\$ 7,851,532
St. Charles College	1,080	\$ 8,431,271	\$ 14,584,341
<b>TOTAL</b>	<b>3,093</b>	<b>\$ 26,471,141</b>	<b>\$ 40,224,890</b>

Proposed Scenario

ARC Option #2 -

Manual  
Input

School Name	2009 OTG	New School Construction or Addition	Cost of New School Construction or Addition	Demolition Costs	Renewal Needs	
					2008/09	2013/14
Pius XII	225	-	\$ 4,000,000	\$500,000	\$ 3,887,051	\$ 2,051,589
St. Andrew	0	--	--		--	--
St. Bernadette	0	--	--		--	--
St. John	368	-	-		\$ 2,269,579	\$ 2,832,381
St. Mark	69	-	--		\$ -	\$ -
St. Paul	386	--	--		\$ 3,154,891	\$ 5,338,750
St. Raphael	539	-	\$ 5,500,000	\$600,000	\$ 5,160,976	\$ 3,851,532
NEW ELEMENTARY SCHOOL	0	--	--		na	na
St. Charles College	1,080	--	\$ 4,000,000		\$ 8,431,271	\$ 14,584,341
		--	--		--	--
<b>TOTAL</b>	<b>2,667</b>	<b>--</b>	<b>\$ 13,500,000</b>	<b>\$ 1,100,000</b>	<b>\$ 22,903,767</b>	<b>\$ 28,658,593</b>
Diff Compared to Status Quo Scenario	-426	--	\$	14,600,000	\$ (3,567,374)	\$ (11,566,298)

PLEASE NOTE: This option will require additional funds from the Ministry of Education

SUDBURY CATHOLIC DISTRICT SCHOOL BOARD

Scenario Builder

Proposed Scenario: ARC Option #3

Financial Summary

Status Quo

School Name	2009 OTG	Renewal Needs	
		2008/09	2013/14
Pius XII	315	\$ 3,887,051	\$ 4,701,968
St. Andrew	201	\$ 1,829,563	\$ 2,468,178
St. Bernadette	135	\$ 1,737,811	\$ 2,447,741
St. John	368	\$ 2,269,579	\$ 2,832,381
St. Mark	69	\$ -	\$ -
St. Paul	386	\$ 3,154,891	\$ 5,338,750
St. Raphael	539	\$ 5,160,976	\$ 7,851,532
St. Charles College	1,080	\$ 8,431,271	\$ 14,584,341
<b>TOTAL</b>	<b>3,093</b>	<b>\$ 26,471,141</b>	<b>\$ 40,224,890</b>

Proposed Scenario

ARC Option #3 -

Manual Input

School Name	2009 OTG	New School Construction or Addition	Cost of New School Construction or Addition	Demolition Costs	Renewal Needs	
					2008/09	2013/14
Pius XII	200	--	\$ 3,500,000	\$500,000	\$ 3,887,051	\$ 2,051,589
St. Andrew	0	--	--		--	--
St. Bernadette	0	--	--		--	--
St. John	368	--	--		\$ 2,269,579	\$ 2,832,381
St. Mark	69	--	--		\$ -	\$ -
St. Paul	386	--	--		\$ 3,154,891	\$ 5,338,750
St. Raphael	0	--	--		--	--
NEW ELEMENTARY SCHOOL	600	600	\$ 11,889,897		na	na
St. Charles College	1,080	--	\$ 4,000,000		\$ 8,431,271	\$ 14,584,341
<b>TOTAL</b>	<b>2,703</b>	<b>600</b>	<b>\$ 19,389,897</b>	<b>\$ 500,000</b>	<b>\$ 17,742,791</b>	<b>\$ 24,807,061</b>
Diff Compared to Status Quo Scenario	-390	--	\$ 19,889,897		\$ (8,728,350)	\$ (15,417,830)

PLEASE NOTE: This option will require additional funds from the Ministry of Education

SUDBURY CATHOLIC DISTRICT SCHOOL BOARD

Scenario Builder

Proposed Scenario: **ARC Option #4 -**

Financial Summary

Status Quo

School Name	2009 OTG	Renewal Needs	
		2008/09	2013/14
Pius XII	315	\$ 3,887,051	\$ 4,701,968
St. Andrew	201	\$ 1,829,563	\$ 2,468,178
St. Bernadette	135	\$ 1,737,811	\$ 2,447,741
St. John	368	\$ 2,269,579	\$ 2,832,381
St. Mark	69	\$ -	\$ -
St. Paul	386	\$ 3,154,891	\$ 5,338,750
St. Raphael	539	\$ 5,160,976	\$ 7,851,532
St. Charles College	1,080	\$ 8,431,271	\$ 14,584,341
<b>TOTAL</b>	<b>3,093</b>	<b>\$ 26,471,141</b>	<b>\$ 40,224,890</b>

Proposed Scenario

ARC Option #4 -

Manual  
Input

School Name	2009 OTG	New School Construction or Addition	Cost of New School Construction or Addition	Demolition Costs	Renewal Needs	
					2008/09	2013/14
Pius XII	225	--	\$ 4,000,000	\$500,000	\$ 3,887,051	\$ 2,051,589
St. Andrew	0	--	--		--	--
St. Bernadette	0	--	--		--	--
St. John	368	--	--		\$ 2,269,579	\$ 2,832,381
St. Mark	69	--	--		\$ -	\$ -
St. Paul	386	--	--		\$ 3,154,891	\$ 5,338,750
St. Raphael	0	--	--		--	--
NEW ELEMENTARY SCHOOL	550	550	\$ 10,899,072		na	na
St. Charles College	1,080	--	\$ 4,000,000		\$ 8,431,271	\$ 14,584,341
<b>TOTAL</b>	<b>2,678</b>	<b>550</b>	<b>\$ 18,899,072</b>	<b>\$ 500,000</b>	<b>\$ 17,742,791</b>	<b>\$ 24,807,061</b>
Diff Compared to Status Quo Scenario	-415	--	\$	19,399,072	\$ (8,728,350)	\$ (15,417,830)

PLEASE NOTE: This option will require additional funds from the Ministry of Education

**SUDBURY CATHOLIC DISTRICT SCHOOL BOARD**

Scenario Builder

Proposed Scenario: **ARC Option #5 -**

**Financial Summary**

**Status Quo**

School Name	2009 OTG	Renewal Needs	
		2008/09	2013/14
Pius XII	315	\$ 3,887,051	\$ 4,701,968
St. Andrew	201	\$ 1,829,563	\$ 2,468,178
St. Bernadette	135	\$ 1,737,811	\$ 2,447,741
St. John	368	\$ 2,269,579	\$ 2,832,381
St. Mark	69	\$ -	\$ -
St. Paul	386	\$ 3,154,891	\$ 5,338,750
St. Raphael	539	\$ 5,160,976	\$ 7,851,532
St. Charles College	1,080	\$ 8,431,271	\$ 14,584,341
<b>TOTAL</b>	<b>3,093</b>	<b>\$ 26,471,141</b>	<b>\$ 40,224,890</b>

**Proposed Scenario**

**ARC Option #5 -**

Manual  
Input

School Name	2009 OTG	New School Construction or Addition	Cost of New School Construction or Addition	Demolition Costs	Renewal Needs	
					2008/09	2013/14
Plus XII	225	--	\$ 4,000,000	\$500,000	\$ 3,887,051	\$ 2,051,589
St. Andrew	0	--	--		--	--
St. Bernadette	0	--	--		--	--
St. John	368	--	--		\$ 2,269,579	\$ 2,832,381
St. Mark	69	--	--		\$ -	\$ -
St. Paul	386	--	--		\$ 3,154,891	\$ 5,338,750
St. Raphael	0	--	--		--	--
NEW ELEMENTARY SCHOOL	670	670	\$ 13,277,052		na	na
St. Charles College	1,080	--	--		\$ 8,431,271	\$ 14,584,341
<b>TOTAL</b>	<b>2,798</b>	<b>670</b>	<b>\$ 17,277,052</b>	<b>\$ 500,000</b>	<b>\$ 17,742,791</b>	<b>\$ 24,807,061</b>
Diff Compared to Status Quo Scenario	-295	--	\$ 17,777,052	\$ -	\$ (8,728,350)	\$ (15,417,830)

PLEASE NOTE: This option will require additional funds from the Ministry of Education

# E-mail Submission #1

My name is Sarah Charland, and I have two children who are attending St. Andrew School. Public speaking is not my strong suit but I do want my voice to be heard. I am deeply disappointed to see that St. Andrew's is, according to all five options presented at the public meeting, slated to be closed. Making the initial decision to send our son to a Catholic School was not an easy one for me as I come from the public school system. However, upon the recommendation of a family friend who is an educator, we came to St. Andrew's and immediately knew that we had found the right school for our son. It is a smaller school which is something that was very important to us as parents. We wanted an environment that would be nurturing as well as providing an excellent academic program. We wanted what every parent wants... peace of mind when sending our children into an environment away from the home.

St. Andrew's is situated in a unique area which has the parish church, a public library, RCMP station and fire and paramedic stations all within 3 blocks. The academic reputation of the school was and continues to be excellent. The most impressive and important thing about St. Andrew's is that it is so much more than just a school. Every student, from JK to grade 6, feels visible, connected and significant. The teachers know the students by name and the students themselves can experience a family atmosphere which helps them to develop their sense of self and belonging to a community. These factors don't show up on a balance sheet or in projections but they have a value that cannot be disregarded. The Ministry of Education has recognized the value of smaller class sizes to student success in the classroom. It should follow that our smaller, community schools are also vital in helping our children become well-rounded individuals with a strong sense of self-worth and a greater capacity to contribute to our communities. So many children are "plugged-in" today that social interactions are becoming limited and awkward. St. Andrew's has created an environment where our children are visible and valued and should be used as an example, not discarded and closed.

St. Andrew's is not prohibitive to repair and though the numbers show that it is at 72 % utilization, every room is in use. I urge the committee to find a way to keep our school open. Whether we bring the students from St. Bernadette to St. Andrew and expand our current site, or keep St. Raphael on the south-side of Lasalle and St. Andrew for the north-side of Lasalle and adjust the boundaries. St. Andrew's deserves to be kept open so that it can continue to inspire its students to succeed. Our city has invested in the two area parks, purchasing new playground equipment and updating many features. They must see a future with children in the community, so I challenge the committee to do the same. In closing, I would remind the committee that bigger is not always better and our schools are here for the children who are so much more than numbers on a spreadsheet.

Parents chose this school and will continue to choose this school, as our increasing JK numbers indicate, because it is here in our area, it envelops our children in a family atmosphere and because of its commitment to academic success. St. Andrew's is the school that I believe in.

# E-mail Submission #2

## Determining Our Students' Future

In considering the move of Grade 7 and 8 classes from their current K-8 schools to St. Charles College it might be prudent to examine the academic research as it pertains to this issue and student success. There is a growing body of research that suggests that the K-8 model is the best configuration for student success.

### □ **Increased Academic Results**

"A growing body of research shows K-8 schools to be effective in improving student achievement in the middle grades. Data collected...show students performing better on standardized tests and displaying higher PGA's in the ninth grade...". (The great K-8 Debate) "Research has shown that students do not experience the same academic declines when the middle school transition is eliminated". (The K-8 Solution: The Retreat From Middle Schools, 2008) "In a number of studies...K-8 schools outperform junior high schools in almost every category assessed". (The great K-8 Debate)

"A recent study (Byrnes, V., & Ruby, A., 2007. Comparing Achievement between K-8 and Middle Schools: A Large-Scale Empirical Study) looked at 95 schools across the country serving over 40,000 students. This report found that older K-8 schools perform significantly better than middle schools, and this advantage is explained by differing average grade size and school transition". (What Does The Research Tell Us About K-8 Grade Configuration And Student Achievement?, December, 2009).

### □ **Strong Church-School-Home Community**

Sudbury Catholic District School Board is proud of our Catholic faith and traditions. The Gospel values of Jesus Christ permeates every aspect of our daily school life including the curriculum, assessments, instructional approaches and teacher and student resources. Neighborhood schools allow close collaboration between local clergy, parents and school staff - the three cornerstones of Catholic education. Churches in many cases are within walking distance, which allows greater accessibility and more frequent school visits to the church. These synergies are reflected in the academic research. A strong school-parish connection helps ensure the preparation highest possible number of grade 8 students for their Sacrament of Confirmation.

Research shows that "Some residential communities turned towards K-8 schools as a means to create true neighborhood schools. The local K-8 school allowed families to avoid sending children across informal boundaries to the middle/high schools, which serves a broader geographical area" (The Great K-8 Debate). Furthermore, other research states that, "In recent years, many districts have expressed a desire to preserve neighborhood schools. The shift to K-8 schools allows students to stay in their neighborhood schools for a longer period of time". (The Benefits of the K-8 Configuration) "Charter schools typically serve a smaller population, which research has shown can be



advantageous because smaller schools better serve the individual needs of students". (The K-8 Solution: The Retreat From Middle Schools, 2008).

□ **Improved Student-Teacher-Parent Bond**

"Students and parents who remain in a K-8 school for nine years are more likely to build and maintain more positive relationships with teachers over time and maintain higher levels of parental involvement than the typical middle school" (The Benefits of the K-8 Configuration).

□ **Improved Discipline**

"Some large middle schools...have experienced a large number of discipline problems resulting in office referrals, in-and-out-of-school suspensions, and expulsions. For example, Franklin & Glascock (1998) found that sixth and seventh graders had fewer suspensions and better attendance in K-8 schools than in middle schools". (The Benefits of the K-8 Configuration). "Studies have shown that students do not suffer the same motivational declines in schoolwork and extra-curricular activities when they stay in a K-8 school. Discipline and absences also are reduced." (The K-8 Solution: The Retreat From Middle Schools, 2008).

□ **Decreased Transitional Stress**

"Alspaugh (1998) found a significant loss following each school-to-school transition. A statistically significant achievement loss was associated with the transition from elementary to middle school at the sixth grade". (The Benefits of the K-8 Configuration) "Secondary teachers could come to see the value of the "whole child" perspective of the elementary schools. This new balance could enrich the perspectives and curriculum at the elementary and secondary level inside the K-8 school". (The Benefits of the K-8 Configuration). "The principal of Vista Verde, a K-8 school in Irving, California found that discipline, dress, and language are better at the school, because the children are expected to act as role models. Students are more active and are willing to get involved in new activities because they feel comfortable with their teachers and peers". (What Does The Research Tell Us About K-8 Grade Configuration And Student Achievement?, December, 2009).

□ **Better Feeling of Safety and Decreased Temptation**

"Parents and children feel safer in a K-8 school as they become older because they are secure in their location and enjoy continuity". Putting middle school students with younger children keeps out the distractions of high school students and the potential for drugs and other negative outside influences." (The K-8 Solution: The Retreat From Middle Schools, 2008). Typically any student in a K-8 school who wants to be part of a school team or activity can be.

□ **Improved Self-Worth and Personal Responsibility**

"The researchers found...students in the K-8 school showed higher self-esteem, less victimization by other students, greater levels of participation in extracurricular activities, and healthier adolescent development." (The great K-8 Debate) "Blyth, Simmons, & Bush (1978) found that adolescent girls suffered from a drop in self-esteem, extra-curricular participation, and leadership behaviors following a transition to middle school, but not when they remained in a K-8 school. For adolescent boys, a similar drop-off was found for extracurricular participation and grades". (The Benefits of the K-8 Configuration).

□ **Local Specific Demographics**

Minnow Lake, which is served by Pius XII, has a significant percentage of the City of Greater Sudbury's population and households. Minnow Lake's demographic statistics are presented below:

**Minnow Lake**

Population 10,056 Households 4,175

**Source:**(<http://www.city.greatersudbury.on.ca/keyfacts/index.cfm?ct=351&items=&sr=&cntid=2432&app=keyfacts&lang=en>)

Further to the population statistics "Many of these new residential units are being constructed in a number of active subdivisions located throughout the City, most notably in the South End, Val Therese, Garson, Lively, New Sudbury and **Minnow Lake**. In 2008, a total of 643 lots were draft approved and 201 lots were registered in various plans of subdivision throughout the City."

**Source:**(<http://www.city.greatersudbury.on.ca/keyfacts/index.cfm?app=KEYFACTS&ct=354&lang=en>)

This increase in new dwellings and residential unit construction ensures that Pius XII will continue to see a steady stream of new registrants for some years to come as the area typically attracts has starting-families with children.

□ **Special Education**

Pius XII presently serves three special education classes. Special education requires: Snoezelen Room, physiotherapy room, instructional area, kitchen, enlarged private bathrooms, equipment storage, a quiet room, Dark and Light

Room, laundry facilities, special instructional room for Physiotherapist, Occupational Therapist and other professionals, gymnasium for gross motor activities, wheelchair accessibility, computer centre, specialized outside equipment, and age appropriate integration in regular classes. The existing facilities need up-grading and should include a hydrotherapy pool.



# Accommodation Options

Option #1	Option #2	Option #3	Option #4	Option #5
Pius XII JK-6 RT	Pius XII JK-6 RT	Pius XII JK-6 RT	Pius XII JK-6 RT	Pius XII JK-6 RT
St. John JK-8 DT	St. John JK-6 DT	St. John JK-8 DT	St. John JK-6 DT	St. John JK-8 DT
St. Mark JK-6 RT	St. Mark JK-6 RT	St. Mark JK-6 RT	St. Mark JK-6 RT	St. Mark JK-6 RT
St. Paul JK-8 DT	St. Paul JK-6 DT	St. Paul JK-8 DT	St. Paul JK-6 DT	St. Paul JK-8 DT
St. Raphael JK-6 DT St. Andrew closes St. Bernadette closes	St. Raphael JK-6 DT St. Andrew closes St. Bernadette closes	New School JK-6 DT St. Raphael closes St. Andrew closes St. Bernadette closes	New School JK-6 DT St. Raphael closes St. Andrew closes St. Bernadette closes	New School JK-8 DT Pius XII 7-8 St. Raphael closes St. Andrew closes St. Bernadette closes
SCC 7-12 DT (with MMC) St. Raphael 7-8 Pius XII 7-8	SCC 7-12 DT (with MMC) Pius XII 7-8 St. John 7-8 St. Mark 7-8 St. Paul 7-8 St. Raphael 7-8	SCC 7-12 DT (with MMC) St. Raphael 7-8 Pius XII 7-8	SCC 7-12 DT (with MMC) Pius XII 7-8 St. John 7-8 St. Mark 7-8 St. Paul 7-8 St. Raphael 7-8	SCC 9-12 DT
St. Albert A.L.C. (t.b.d.)	St. Albert A.L.C. (t.b.d.)	St. Albert A.L.C. (t.b.d.)	St. Albert A.L.C. (t.b.d.)	St. Albert A.L.C. (t.b.d.)

# Finalize Accommodation Options

---

# Draft Accommodation Recommendations

---

**EASTPLANNING AREA  
ACCOMMODATION REVIEW COMMITTEE**

**REPORT TO THE DIRECTOR OF EDUCATION  
OF THE  
SUDBURY CATHOLIC DISTRICT SCHOOL BOARD**

**TABLE OF CONTENTS**

	<b><u>Page</u></b>
<b>ARC Report to the Director of Education</b>	<b>1</b>
<b>Tab 1: Board Regulations</b> BR10 – Pupil/School Accommodation Review	
<b>Tab 2: Minutes from the ARC Working and Public Meetings</b>	
<b>Tab 3: School Valuation Reports</b>	

# Timelines for Review

---

#	TASK	DATE
12	<b>3rd Public Meeting</b>	<b>Jan 13, 2010</b>
13	Working Group Meeting (# 10) - Pius XII (6pm to 8pm)	Jan 20, 2010
14	Working Group Meeting (# 11) - St. Albert ALC (6pm to 8pm)	Feb 3, 2010
15	<b>4th Public Meeting</b>	<b>Feb 17, 2010</b>
16	Working Group Meeting (# 12) - St. Andrew (6pm to 8pm)	Feb 24, 2010
17	<b>Submission of Report to the Director</b>	<b>Mar 3, 2010</b>
18	<b>Director Presentation of Recommendations to the Board</b>	<b>Mar 23, 2010</b>
19	<b>Submission Deadline of Public Application Form and written copy of the brief to be presented to the Board</b>	<b>Apr 20, 2010</b>
20	<b>Public Input / Presentation to the Board</b>	<b>Apr 27, 2010</b>
21	<b>Accommodation Review vote by the Board</b>	<b>May 25, 2010</b>
22	<b>Ministerial Review Deadline</b>	<b>Jun 24, 2010</b>

# Task for Next Meetings

---

## **Working Meeting #11 – February 3, 2010**

- Review and approve member rationale (pros and cons) submitted by 9am, January 29, 2010 for accommodation recommendations
  
- Prepare Draft ARC Report to the Director for presentation at Public Meeting #4




# Questions & Answers

---

---

From:  Carole Remillard

Wednesday, January 06, 2010 7:58:30 AM 

Subject: Re: Working Mtg #8

To:  **ARC Mailbox**

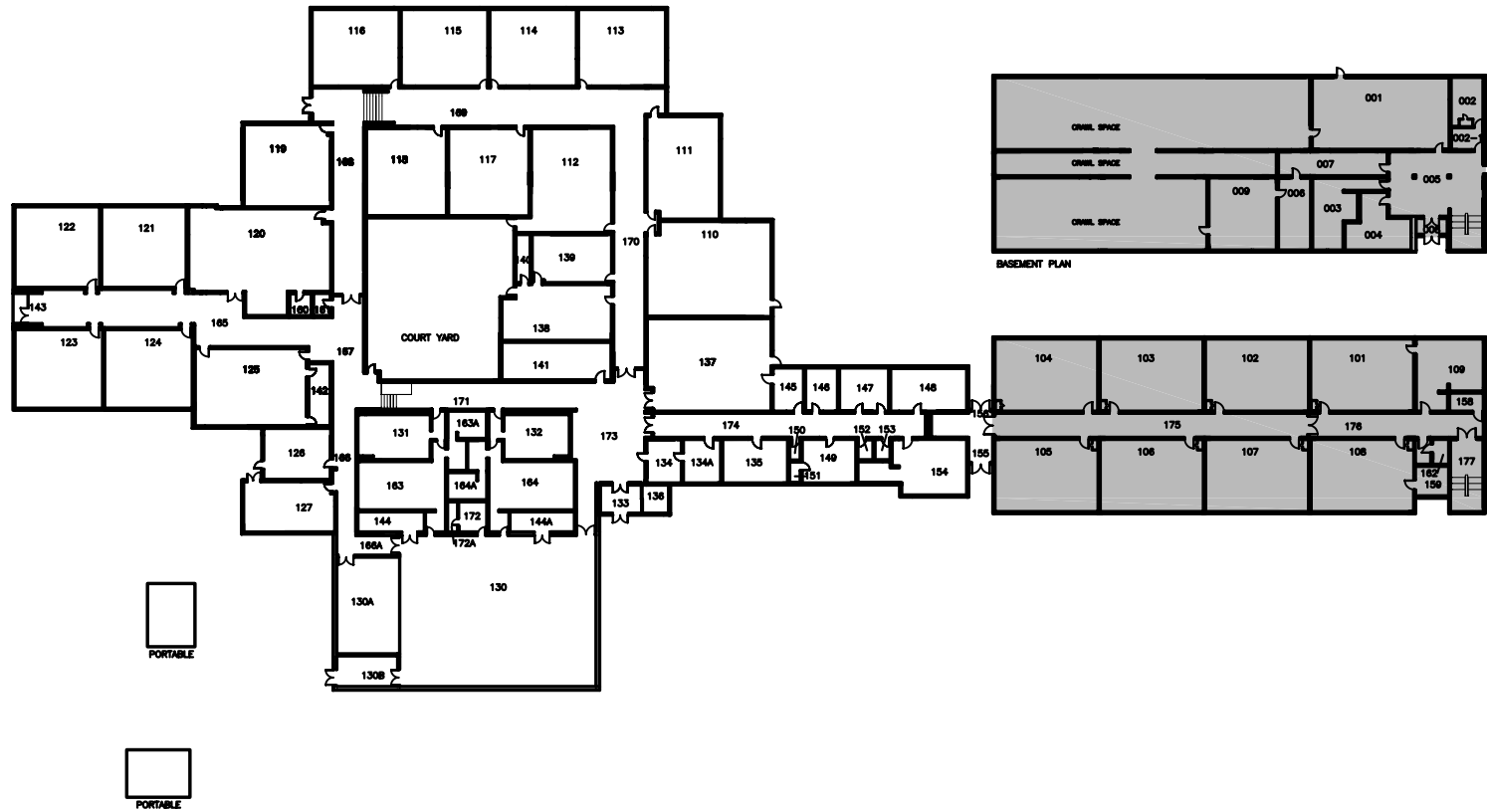
---

Hi Steve,

I am assuming that options 4-7 indicate that one of the reasons for the 7-8 from St-Raphael and Pius XII go to SCC because these schools are partially prohibited to repair. I am also assuming that these sections that are prohibited to repair might be removed if the 7-8 students go to SCC (depending on where the prohibited to repair sections are located). Therefore, would it be possible to receive maps of Pius XII and St-Raphael indicated which sections are prohibited to repair?  
Thanks.

PLAN #	NAME/USE	ROOM #
001	CLASSROOM/J.K./S.K.	009
002	CUSTODIAL OFFICE	
002A	STORAGE	
003	GIRLS WASHROOM	
004	BOYS WASHROOM	
005	FOYER	
006	BOILER RM.	
007	STORAGE/JANITOR	
008	VESTIBULE	
009	STORAGE	
101	CLASSROOM	1
102	CLASSROOM	2
103	CLASSROOM	3
104	CLASSROOM	4
105	CLASSROOM	5
106	CLASSROOM	6
107	CLASSROOM	7
108	CLASSROOM	8
109	LIFE SKILLS KITCHEN	9
110	CLASSROOM	10
111	CLASSROOM	11
112	CLASSROOM	12
113	CLASSROOM	13
114	CLASSROOM	14
115	CLASSROOM	15
116	CLASSROOM	16
117	CLASSROOM	17
118	CLASSROOM	18
119	CLASSROOM	19
120	CLASSROOM	20
121	CLASSROOM	21
122	CLASSROOM	22
123	CLASSROOM	23
124	CLASSROOM	24
125	CLASSROOM	
126	STORAGE/JANITOR	
127	UTILITY/BOILER ROOM	
130	GYMNASIUM	
130A	STAGE	
130B	STAGE STORAGE	
131	GIRLS WASHROOM	
132	BOYS WASHROOM	
133	ENTRANCE	
134	SECRETARY B OFFICE	
134A	OFFICE	
135	PRINCIPAL	
136	GREEN ROOM	
137	J.K./S.K.	
138	SEMINAR ROOM	
139	RESOURCE	
140	STORAGE	
141	BOOK ROOM	
142	STORAGE	
143	ENTRANCE/CORRIDOR	
144	GYM STORAGE	
144A	GYM STORAGE	
145	FRENCH OFFICE	
146	STAFF WORK ROOM	
147	UTILITY/ELECTRICAL	
148	STORAGE/SUPPLIES	
149	VICE-PRINCIPAL	
150	JANITORIAL	
151	WASHROOM	
152	FEMALE WASHROOM	
153	MALE WASHROOM	
154	STAFF KITCHEN	
155	ENTRANCE	
156	ENTRANCE	
158	WASHROOM	
159	LIFE SKILLS	
160	WASHROOM	
161	JANITORIAL	
162	WASHROOM	
163	CHANGE ROOM	
163A	SHOWERS/STORAGE	
164	CHANGE ROOM	
164A	SHOWERS/STORAGE	
165	CORRIDOR	
166	CORRIDOR	
166A	STAIR	
167	CORRIDOR	
168	CORRIDOR	
169	CORRIDOR	
170	CORRIDOR	
171	CORRIDOR/STAIR	
172	OFFICE	
172A	WASHROOM	
173	FOYER	
174	CORRIDOR	
175	CORRIDOR	
176	CORRIDOR	
177	STAIR	

LEGEND



SUDBURY CATHOLIC DISTRICT SCHOOL BOARD

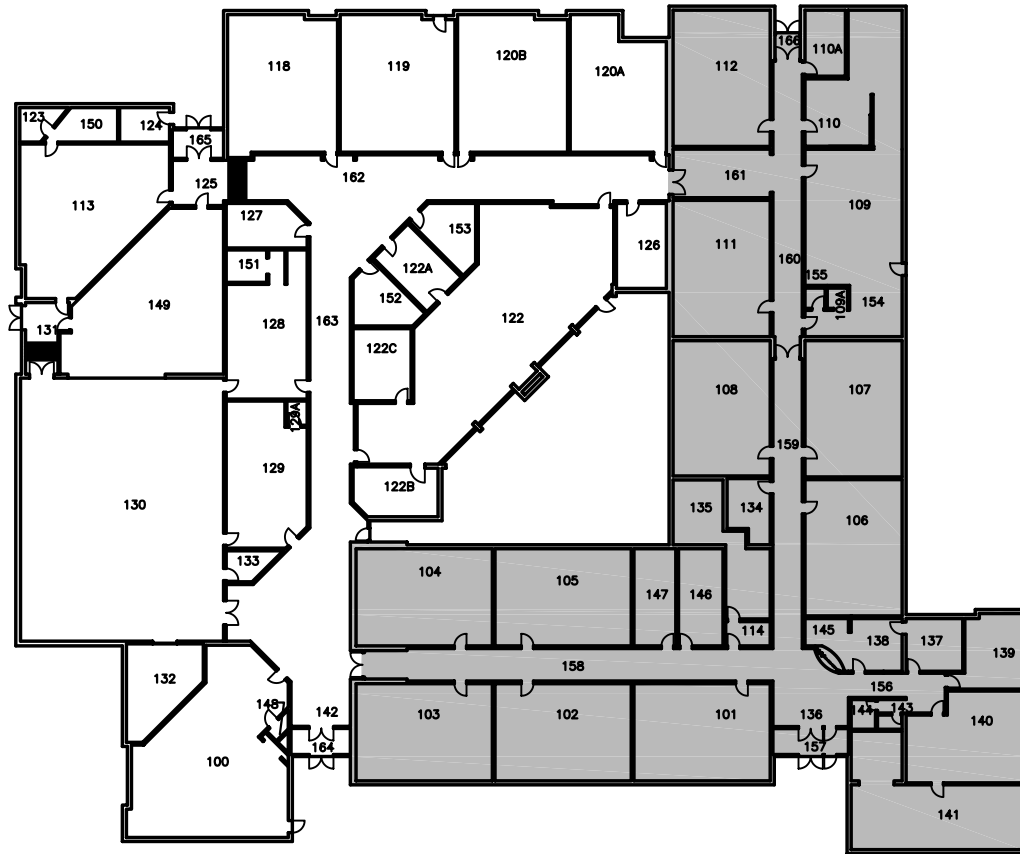
SCHOOL  
ST. RAPHAEL SCHOOL  
1096 DUBLIN STREET, SUDBURY, ONTARIO  
DRAWING  
FLOOR PLAN

DATE 2010-01-20  
SCALE 1" = 40'-0"  
SHEET NUMBER 207  
SHEET

A100

PLAN #	NAME/USE	ROOM #
100	S. K. CLASSROOM	
101	LEASED	1
102	LEASED	2
103	CLASSROOM	3
104	CLASSROOM	4
105	S. K. CLASSROOM	5
106	CLASSROOM	6
107	CLASSROOM	7
108	COMPUTER ROOM	8
109	SPECIAL EDUCATION	9
109A	SPECIAL EDUCATION	
110	SPECIAL EDUCATION	10
110A	SNOEZELEN ROOM	
111	CLASSROOM	111
112	SPECIAL EDUCATION	12
113	CLASSROOM	113
114	STORAGE/JANITOR	
118	CLASSROOM	118
119	CLASSROOM	119
120A	SPECIAL EDUCATION	120A
120B	SPECIAL EDUCATION	120B
122	LIBRARY/COMPUTER	122
122A	A-V ROOM	124
122B	RESOURCE/WITHDRAWL	122B
122C	SEMINAR ROOM	
123	STORAGE	123
124	FIELD STORAGE	124
125	ENTRANCE	125
126	VP OFFICE	126
127	JANITORIAL/VACANT	127
128	BOYS CHANGE RM.	128
129	GIRLS CHANGE RM.	108
129A	WASHROOM	
130	GYMNASIUM	130
131	ENTRANCE	131
132	GYM STORAGE	132
133	STORAGE	107
134	UTILITY/ELECTRICAL RM.	134
135	UTILITY/BOILER ROOM	135
136	ENTRANCE	
137	V. P. OFFICE	
138	OFFICE	
139	OFFICE/PRINCIPAL	
140	STAFF ROOM	
141	STORAGE	
142	ENTRANCE	142
143	WASHROOM	
144	WASHROOM	
145	STORAGE	
146	BOYS WASHROOM	
147	GIRLS WASHROOM	
148	WASHROOM	148
149	MUSIC (INSTRUMENTAL)	149
150	STORAGE	150
151	SHOWERS	151
152	GIRLS WASHROOM	152
153	BOYS WASHROOM	153
154	SPECIAL EDUCATION	154
155	WASHROOM	155
156	CORRIDOR	
157	VESTIBULE	
158	CORRIDOR	
159	CORRIDOR	
160	CORRIDOR	
161	CORRIDOR	
162	CORRIDOR	
163	CORRIDOR	
164	VESTIBULE	
165	VESTIBULE	
166	VESTIBULE	

LEGEND



SUDBURY CATHOLIC DISTRICT SCHOOL BOARD

SCHOOL  
 PIUS XII  
 44 THIRD AVENUE, SUDBURY, ONTARIO, P3B 3P8  
 DRAWING  
 FLOOR PLAN

DATE: 2010-01-20  
 SCALE: 1" = 30'-0"  
 SPOCK NUMBER: 115  
 SHEET: 115

A100

# Next Meeting Dates

---

## Working Meeting #11

February 3, 2010

6:00 to 8:00 p.m.

St. Albert Adult Learning Centre

# Closing Prayer

---

*LET US PRAY:*

*We believe in you, God Almighty, and we thank you for your help during our deliberations.*

*Guide us through your Holy Spirit in our mission as educators of your children.*

*Help us to understand one another, so that we may contribute by our decisions to the growth of the Christian values of Love and Justice in our society.*

*We ask this through your Son, Jesus Christ, Our Lord.*

*Amen.*